

UPDATING TO ASSIST 3.2 OR NEWER - LICENSE ACTIVATION

FOR :

- USERS OF ASSIST 3.1 AND OLDER VERSIONS WANTING TO UPDATE TO A NEWER VERSION

Agenda

1. Desktop Software

- Update from 3.1 (or older) to 3.2 (Or newer) [Click here](#)

2. Embedded Software on Portable Instrument

- Update license [Click here](#)

3. Download links

Desktop Software - Update Existing Software Key

Update Existing License

MOVING FROM 3.1 (OR OLDER) TO 3.2 (OR NEWER)

The licensing Engine of Assist has changed with version 3.2.

For **Assist Pro**, **Assist CPN** and **Assist Pro Diver**, please follow the following procedure to update to the latest version.

From the Eddyfi website, download the latest Assist desktop version :

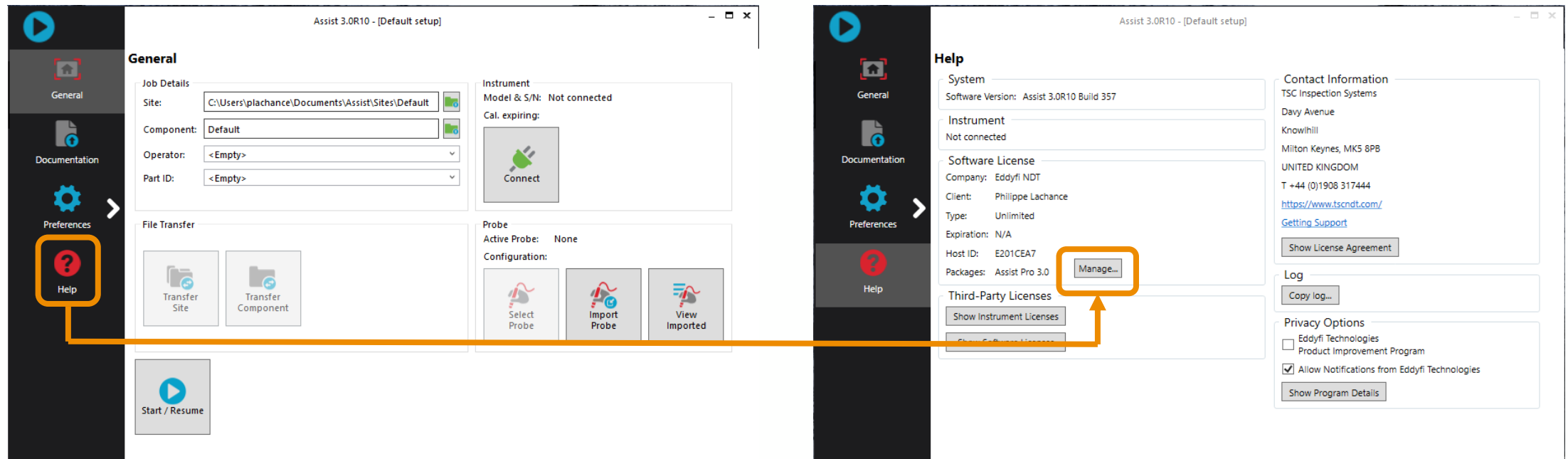
<https://eddyfi.com/en/software/tsc-assist>

- Save the .zip file
- Unzip the file

Update Existing License

MOVING FROM 3.1 (OR OLDER) TO 3.2 (OR NEWER)

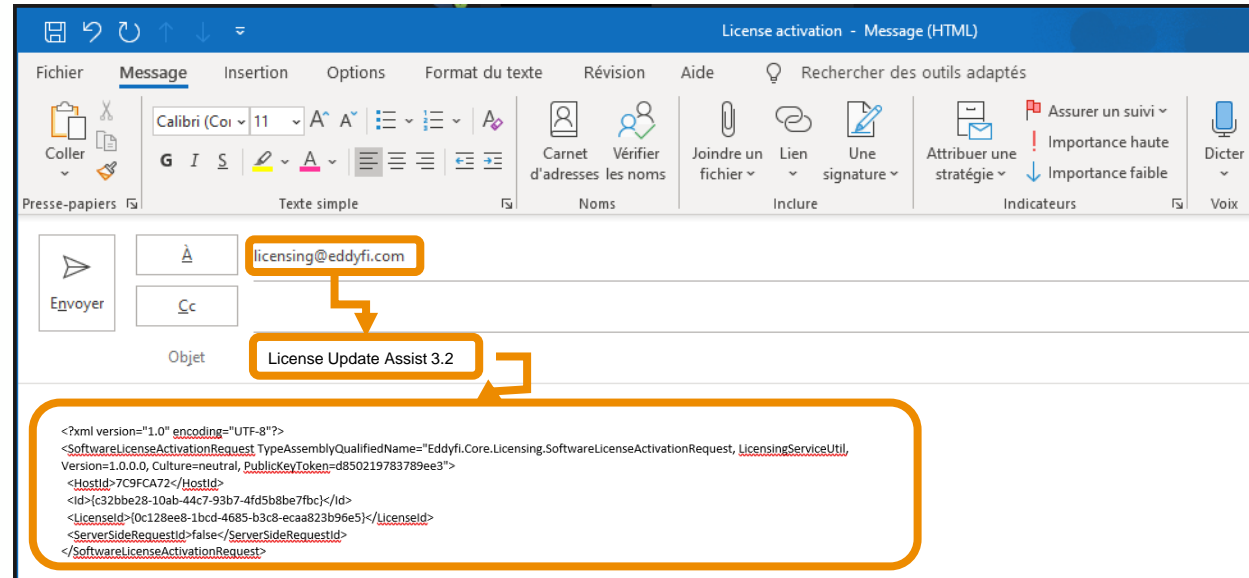
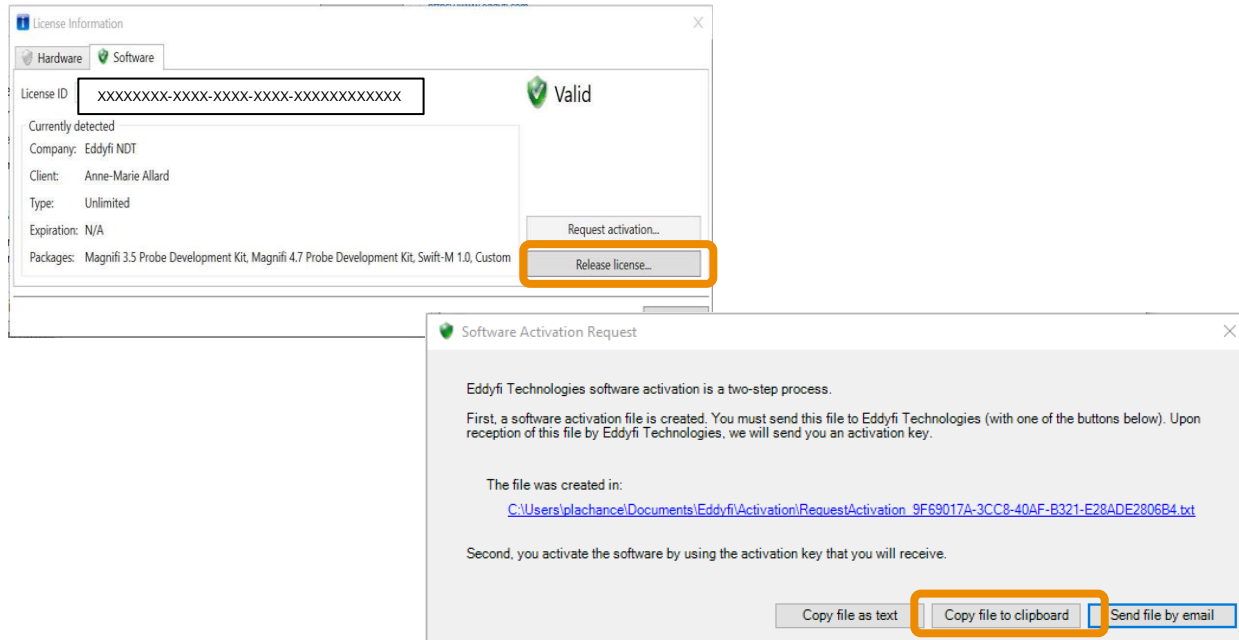
- This process requires an activation from Eddyfi and can take up to 1 working day to process during which your software will be inoperable. Please make sure the timing is right before going forward.
- Launch your older version of Assist
- In the backstage, click on the *Help* menu, then on *Manage*



Update Existing License

SOFTWARE KEY

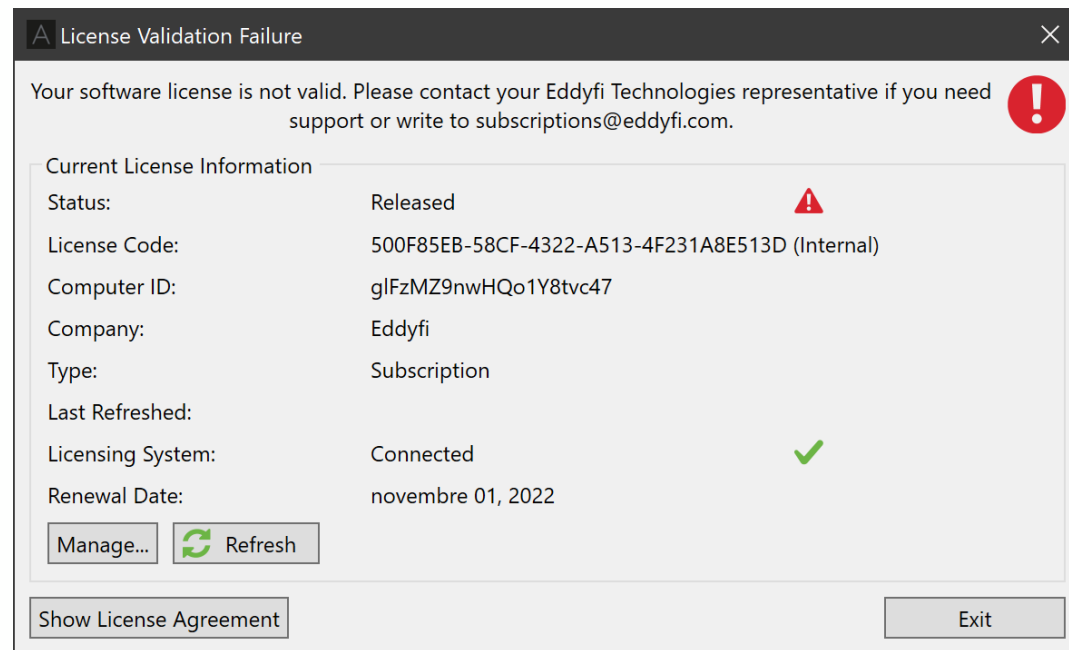
- Select the *Software* tab then click on *Release license...*
- Click on **Copy file to clipboard**
- Create a new email and paste the release confirmation in the message box
 - Address the email to licensing@eddyfi.com, with « License Update Assist 3.2 » as the subject



Update Existing License

SOFTWARE KEY

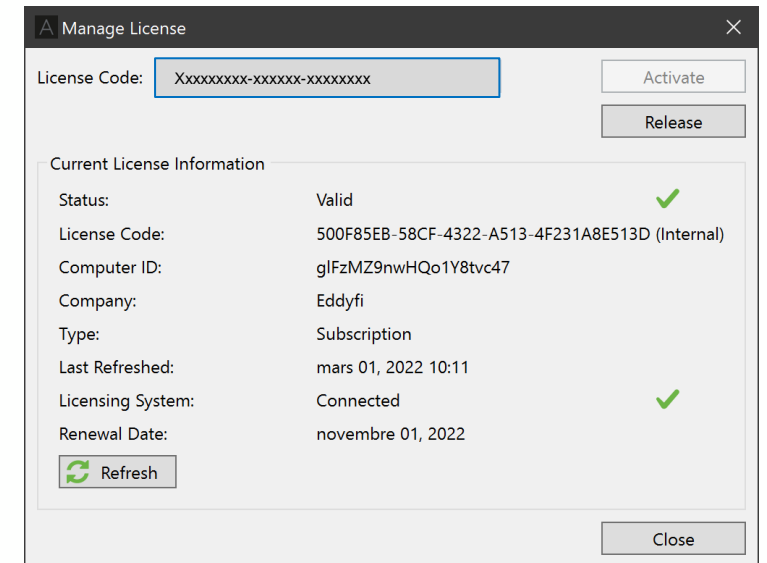
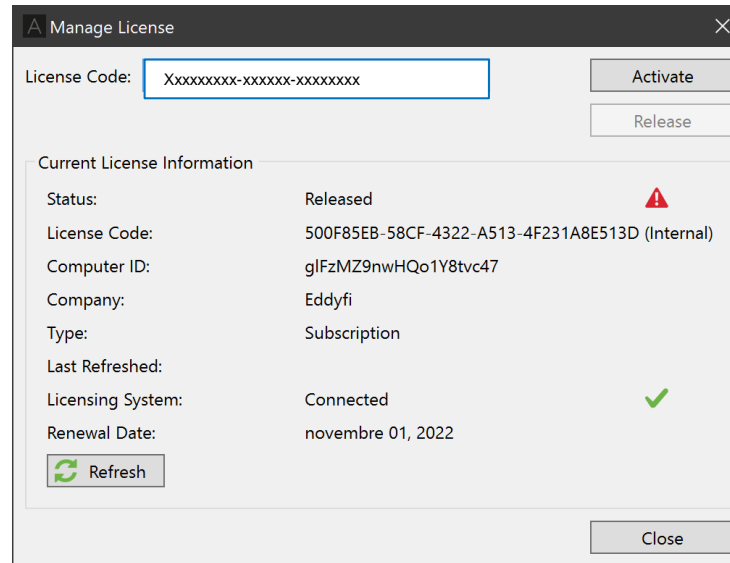
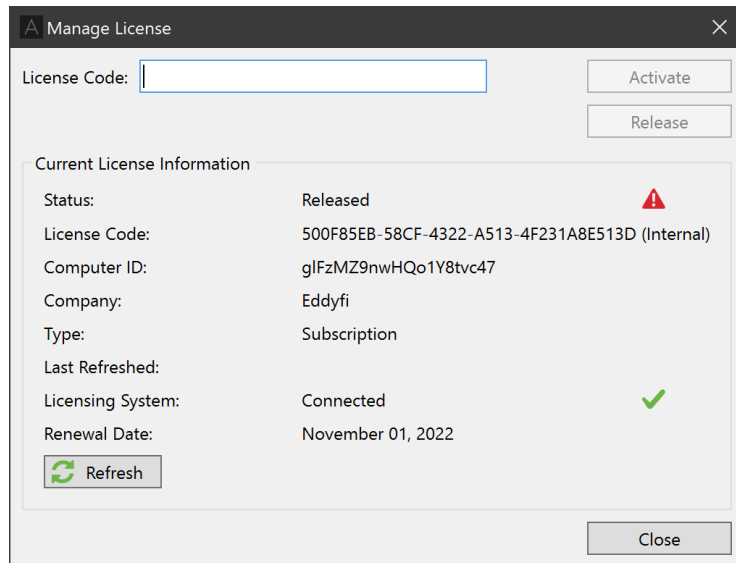
- You should receive a new license code from licensing@eddyfi.com
- **Copy** the code.
- Open Assist 3.2 (Or newer). A window will appear prompting you to update your license.



Update Existing License

SOFTWARE KEY

- Click on Manage, which will open a new window
- In the new window, **Paste** the code in the empty field and click on Activate.
- Close the window.
- You should now be able to use Assist 3.2 (Or newer).



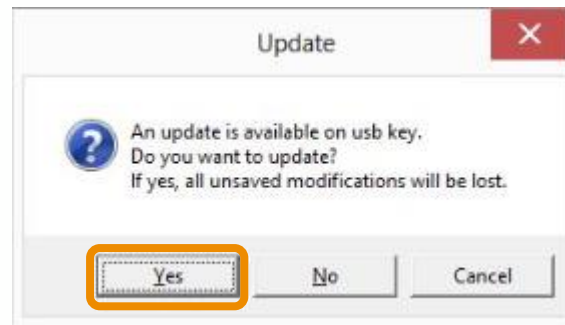
Embedded Software on Amigo 2 Portable Instrument
– Update License
–

Update License

PORTABLE INSTRUMENT

Once your request has been validated and processed, you will receive a license file (in .zip format, which will contain a .txt file) by email

- Save the .zip file to your workstation and unzip the file
- Copy the update file to the root folder of a USB mass-storage device (MSD)
- Turn on your instrument
- Once the instrument is launched, connect the MSD to one of the USB ports on the instrument
- When the below window appears on the screen, click Yes

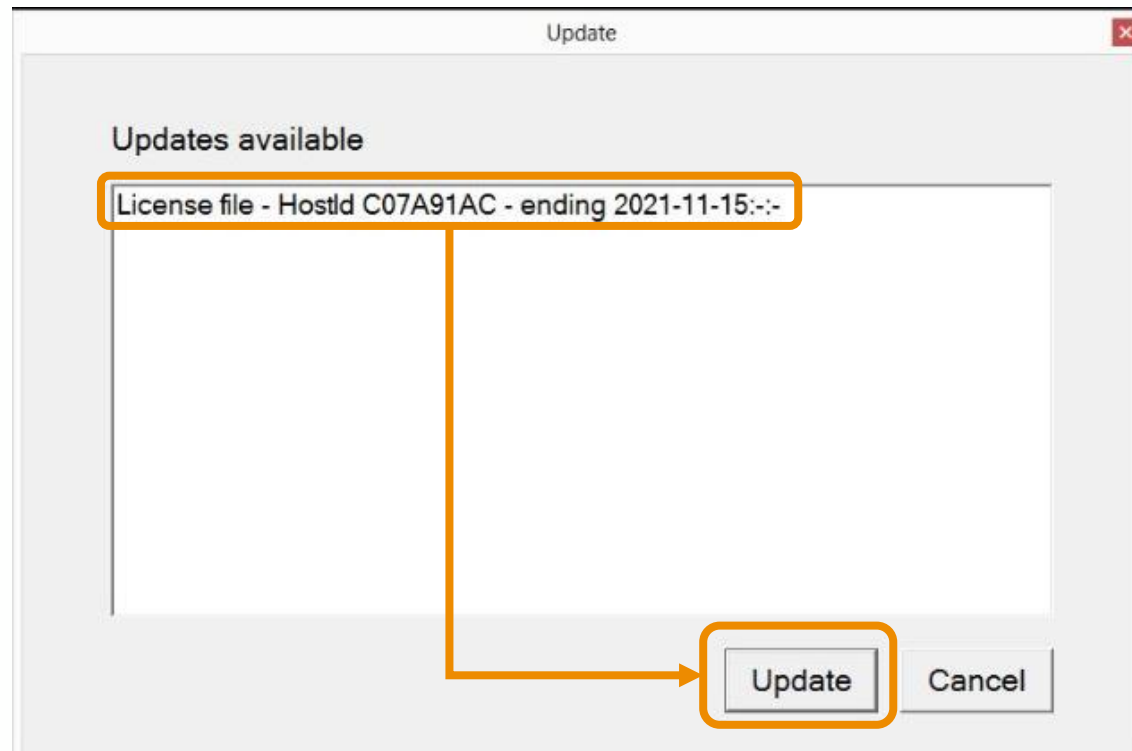


Please note that an embedded licence cannot be used to activate Assist on a desktop computer.

Update License

PORTABLE INSTRUMENT

- In the dialog box that appears, select the update file
- Click *Update*
- The license updates and the instrument restarts
- Disconnect the MSD



Download links

Download links

- Assist: [Click here](#)

